

9. You can put two target holders on the SpiderBot's front legs to make the shooting angle higher. You can also store the target holders on the battery door when not in use.

E. HOW IT WORKS

The motor turns the wheel at high speed. When you put a foam disc into the slot, the grooved edge of the wheel catches the edge of the disc. This grabs the disc and accelerates it to high speed. It also makes the disc spin. The spinning motion keeps the disc stable as it flies.

F. TROUBLE SHOOTING

If the motor does not run:

- Check that your batteries are fresh and inserted into the battery case with the correct polarities.
- Check that you have inserted the wires correctly in the terminals. Also check that the bare metal ends of the wires are in contact with the metal part of the terminals.

G. FUN FACTS

- Ground spiders don't spin webs, but they do shoot out silk as a weapon to smother their prey.
- A spinning disc has rotational inertia. This means that it doesn't wobble side to side or tip backwards and forwards as it flies.
- A spinning frisbee works like one of SpiderBots's foam discs. It has rotational inertia when it's thrown, so it flies without tipping over.
- Machines with spinning wheels like the SpiderBot are used to launch balls such as baseballs and cricket balls at different speeds and with different spins for batters to practice their shots.
- Robots with six legs (like insects) or eight legs (like spiders) are very stable when they walk along. They can move one or two legs at a time, keeping the other legs on the ground. They can't topple over by accident.

DISC LAUNCHER SPIDERBOT

PLEASE SCAN THE QR CODE TO VIEW MULTI-LANGUAGE INSTRUCTIONS

FR: Veuillez scanner le code QR pour afficher les instructions multilingues pour ce kit. DE: Bitte scanne den QR-Code, um die mehrsprachige Anleitung für dieses Set anzusehen. NL: Scan de QR-code om de instructies voor deze set in verschillende talen te bekijken. IT: Scansiona il codice QR per visualizzare le istruzioni multi-lingua per questo kit. ES: Escanee el código QR para ver instrucciones en varios idiomas para este kit. PT: Por favor, leia o código QR para visualizar instruções multilínguas. GR: ΣΚΑΝΑΡΕΤΕ ΤΟΝ ΚΩΔΙΚΟ QR ΓΙΑ ΝΑ ΔΕΙΤΕ ΤΙΣ ΟΔΗΓΙΕΣ ΚΑΙ ΣΕ ΑΛΛΕΣ ΓΛΩΣΣΕΣ.

**⚠ WARNING:**  
**CHOKING HAZARD - Small parts.**  
Not for children under 3 years. Do not aim at eyes or face. Do not discharge an object other than the projectile provided with this toy.

A. SAFETY MESSAGES

1. Adult supervision and assistance are required at all times.
2. This kit is intended for children 8 years or older.
3. This kit and its finished product contain small parts which may cause choking if misused. Keep away from children under 3 years old.
4. To prevent possible short circuits, never touch the contacts inside the battery case with any metal.
5. Only install batteries by adult after assembly.
6. Please read through all the instructions and keep them since they contain important information.

B. USE OF BATTERIES

1. Requires three 1.5V AAA batteries (not included).
2. For best results, always use fresh batteries.
3. Make sure you insert the batteries with the correct polarities.
4. Remove the batteries from the kit when not in use.
5. Replace exhausted batteries straight away to avoid possible damage to the kit.
6. Rechargeable batteries must be removed from the kit before recharging.
7. Rechargeable batteries must be recharged under adult supervision.
8. Make sure that the supply terminals in the battery case are not short circuited.
9. Do not attempt to recharge non-rechargeable batteries.
10. Do not mix old and new batteries.
11. Do not mix alkaline, standard (carbon-zinc), or rechargeable batteries.

C. CONTENTS

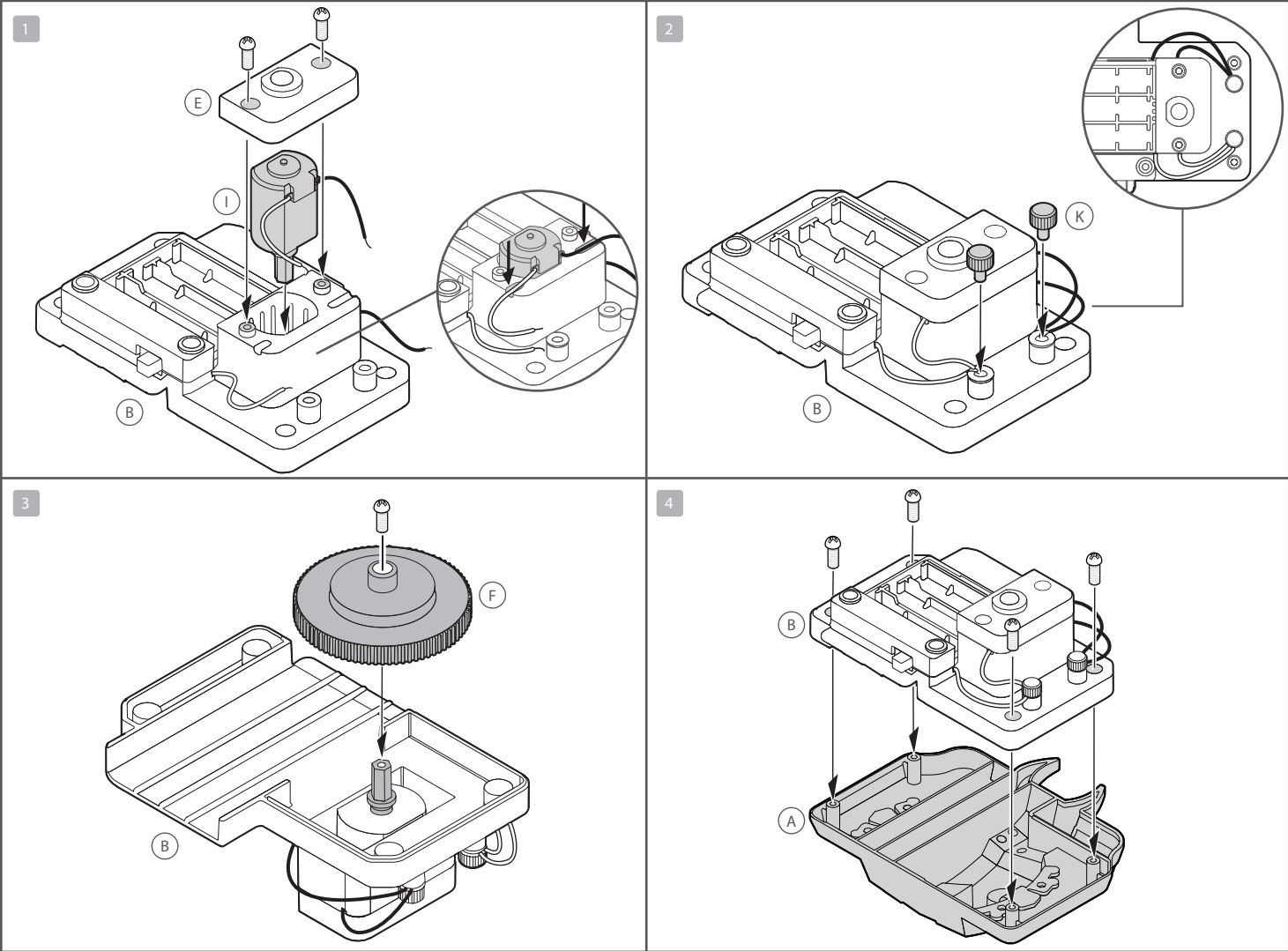
<div>A</div>	<div>B</div>	<div>C</div>	x 2	
<div>D</div>	<div>E</div>	<div>F</div>	<div>G</div>	x 4
<div>H</div>	<div>I</div>	<div>J</div>	<div>K</div>	x 2
x 10			<div>L</div>	x 9

Part A: body cover, Part B: base, Part C: leg x 2, Part D: battery cover with screw, Part E: motor cover, Part F: wheel, Part G: target holder x 4, Part H: foam disc x 10, Part I: motor, Part J : target template, Part K: terminal cap x 2, Part L: screw x 9. Also required but not included in the kit: 3 x 1.5-volt AAA batteries, a small crosshead screwdriver.

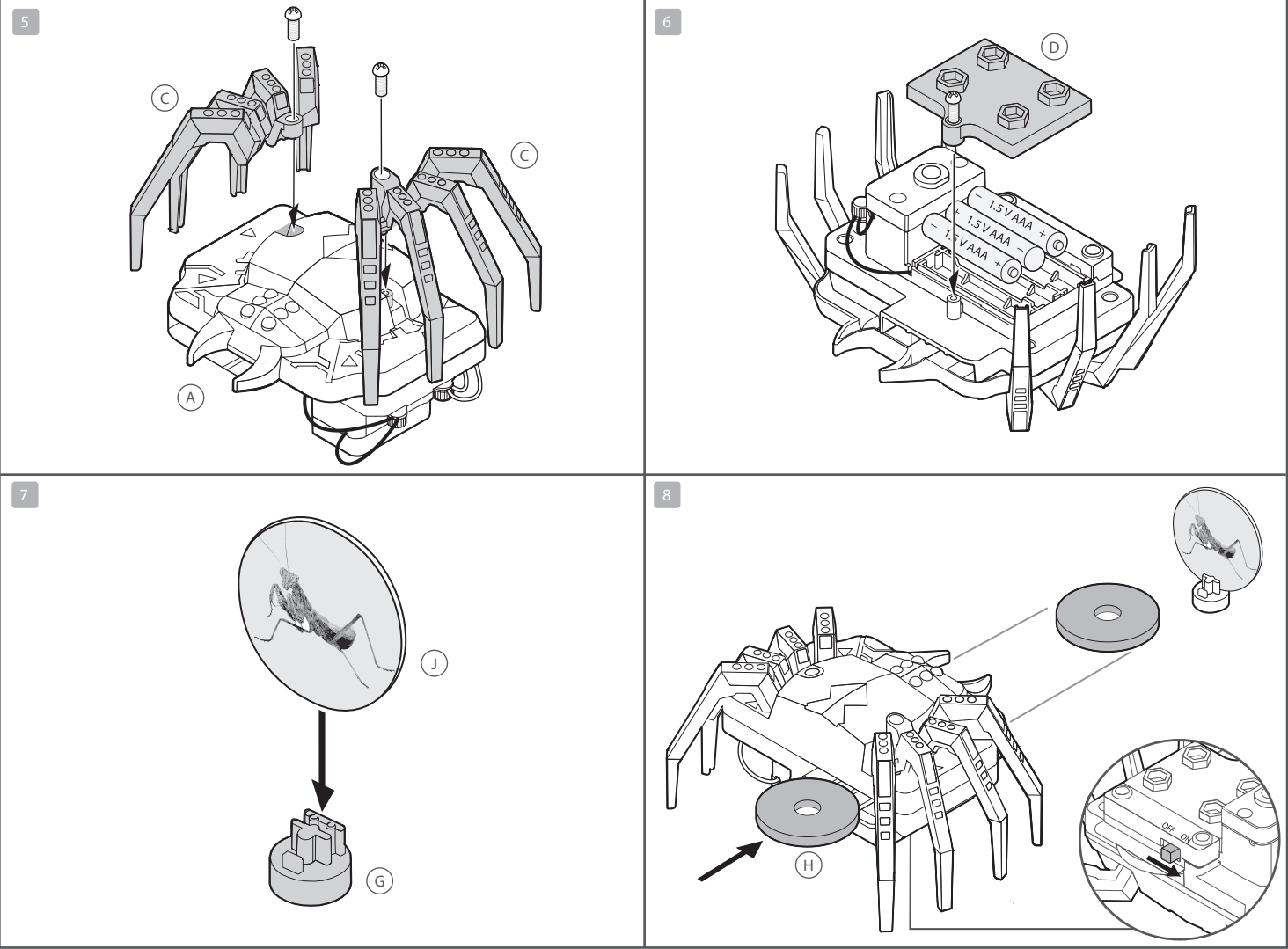
QUESTION AND COMMENTS

We treasure you as a customer and your satisfaction with this product is important to us. In case you have any comments or questions, or you find any parts of this kit missing or defective, please do not hesitate to contact our distributor in your country, whose address is printed on the package. You are also welcome to contact our marketing support team at Email: infodesk@4M-IND.com, Fax (852) 25911566, Tel (852) 28936241, Web site: WWW.4M-IND.COM

D. INSTRUCTIONS



1. Insert the motor (part I) into the base (part B). Make sure that the two wires are placed in the slots as shown. Add the motor cover (part E) and secure it with two screws (part L).
2. Insert the ends of the red and black wires into the terminals as shown. Push in terminal caps (part K) to secure the wires in the terminals.
3. Push the wheel (part F) onto the motor's spindle and secure it with a screw.
4. Join the base to the body cover (part A) and secure them together with four screws.



5. Add a leg (part C) to each side of the body and secure each leg with a screw.
6. Insert three 1.5-volt AAA batteries into the battery compartment as shown. Add the battery cover (part D) and secure it with a screw. Only install batteries by adult after assembly.
7. Insert target cards (part J) into the target holders (part G).
8. Congratulations! Your SpiderBot is ready to go! Switch on the button and slowly feed a foam disc (part H) into the back slot on the body. The spider will shoot the disc out of its front slot at high speed! Try putting targets up and challenge yourself to shoot them down!