

13. If the robot turns left, try adding the adjustor (Part H) to the left foot and slide it left or right to adjust the direction.
14. If the robot turns right, try adding the adjustor (Part H) to the right foot and slide it left or right to adjust the direction.

E. TROUBLESHOOTING

If the motor does not operate:

- check that the batteries are fresh or charged up.
- check that the bare ends of the wires are touching the terminals.

If the motor runs backwards:

- check that you have matched the wire colours in the terminals.

If the robot turns left or right:

- see the instructions above to correct this.

F. HOW DOES IT WORK?

The battery supplies electricity to the motor, which turns the gears in the gearbox. The motor's spindle turns quickly and the gearbox slows this movement down so that the robot's parts move slowly. The gearbox turns the axles that move the feet and arms, and moves a lever up and down that operates the jaw and the eyelids.

G. FUN FACTS

T-Rex is short for Tyrannosaurus rex, which means 'king of the tyrant lizards'.
A T-Rex was as long as a bus and twice as heavy as an elephant.
A T-Rex's jaws were powerful enough to crush a car!
T-Rex ran on its two powerful back legs. But it could only reach a speed of about 20 kilometres per hour.
In a T-Rex's teeth were 60 serrated teeth about 20 centimetres long. These were used to grip and cut into the flesh of the animals it hunted.
Special effects experts built a life-sized animatronic T-Rex for the film Jurassic Park, which was released in 1993.

QUESTION AND COMMENTS
We treasure you as a customer and your satisfaction with this product is important to us. In case you have any comments or questions, or you find any parts of this kit missing or defective, please do not hesitate to contact our distributor in your country, whose address is printed on the package. You are also welcome to contact our marketing support team at Email: infodesk@4M-IND.com, Fax (852) 25911566, Tel (852) 28936241, Web site: WWW.4M-IND.COM

TYRANNOSAURUS REX ROBOT

PLEASE SCAN THE QR CODE TO VIEW MULTI-LANGUAGE INSTRUCTIONS

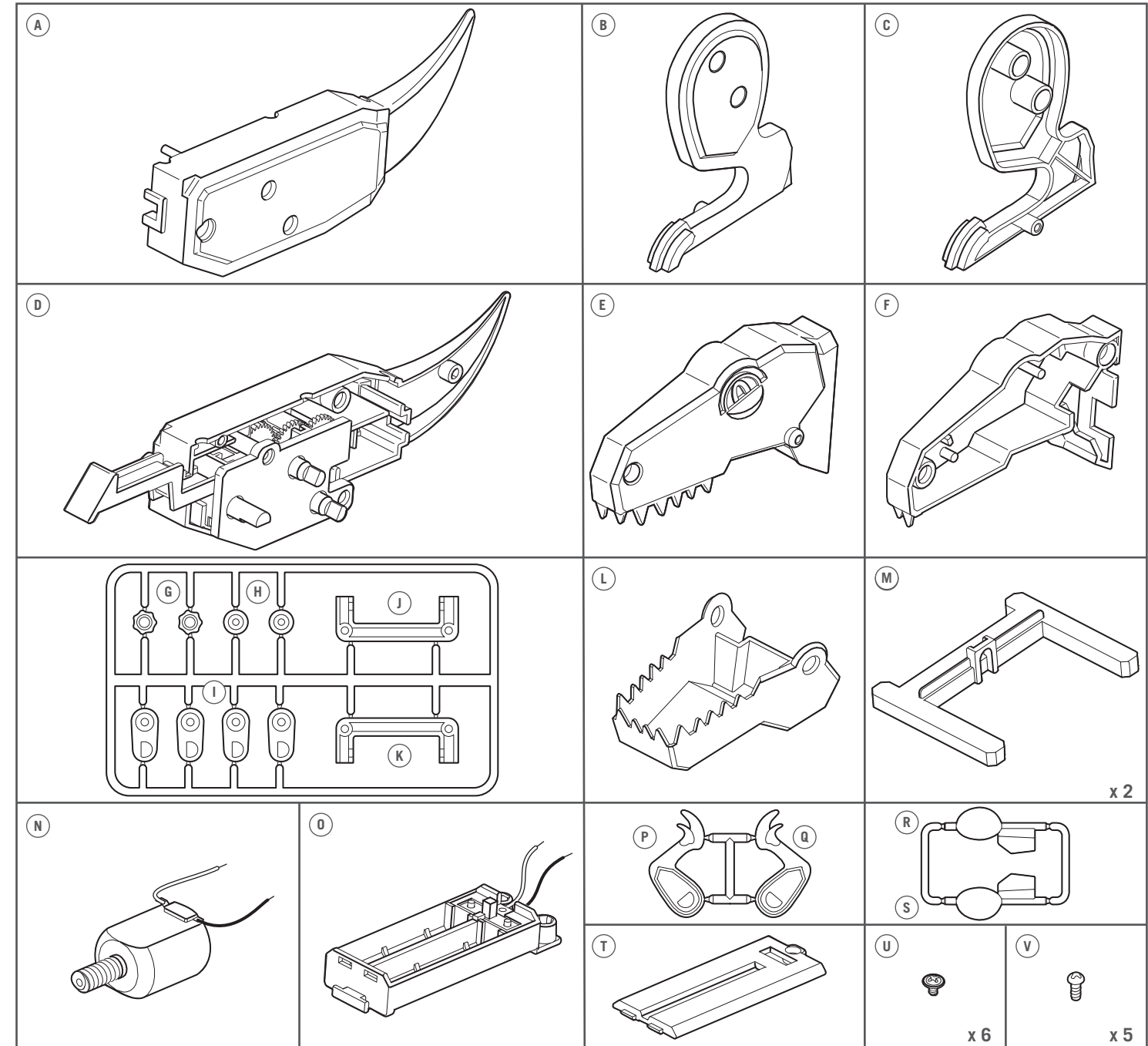
⚠ WARNING:
CHOKING HAZARD -
Small parts.
Not for children under 3 years.

TO PARENTS: PLEASE READ THROUGH THESE INSTRUCTIONS BEFORE PROVIDING GUIDANCE TO YOUR CHILDREN.

A. SAFETY MESSAGES
1. Adult supervision and assistance are required at all times. 2. This kit is intended for children 8 years or older. 3. This kit and its finished product contain small parts which may cause choking if misused. Keep away from children under 3 years old. 4. To prevent possible short circuits, never touch the contacts inside the battery case with any metal. 5. Only install batteries after the kit is assembled. Adult supervision is required. 6. Please read through all the instructions and keep them since they contain important information.

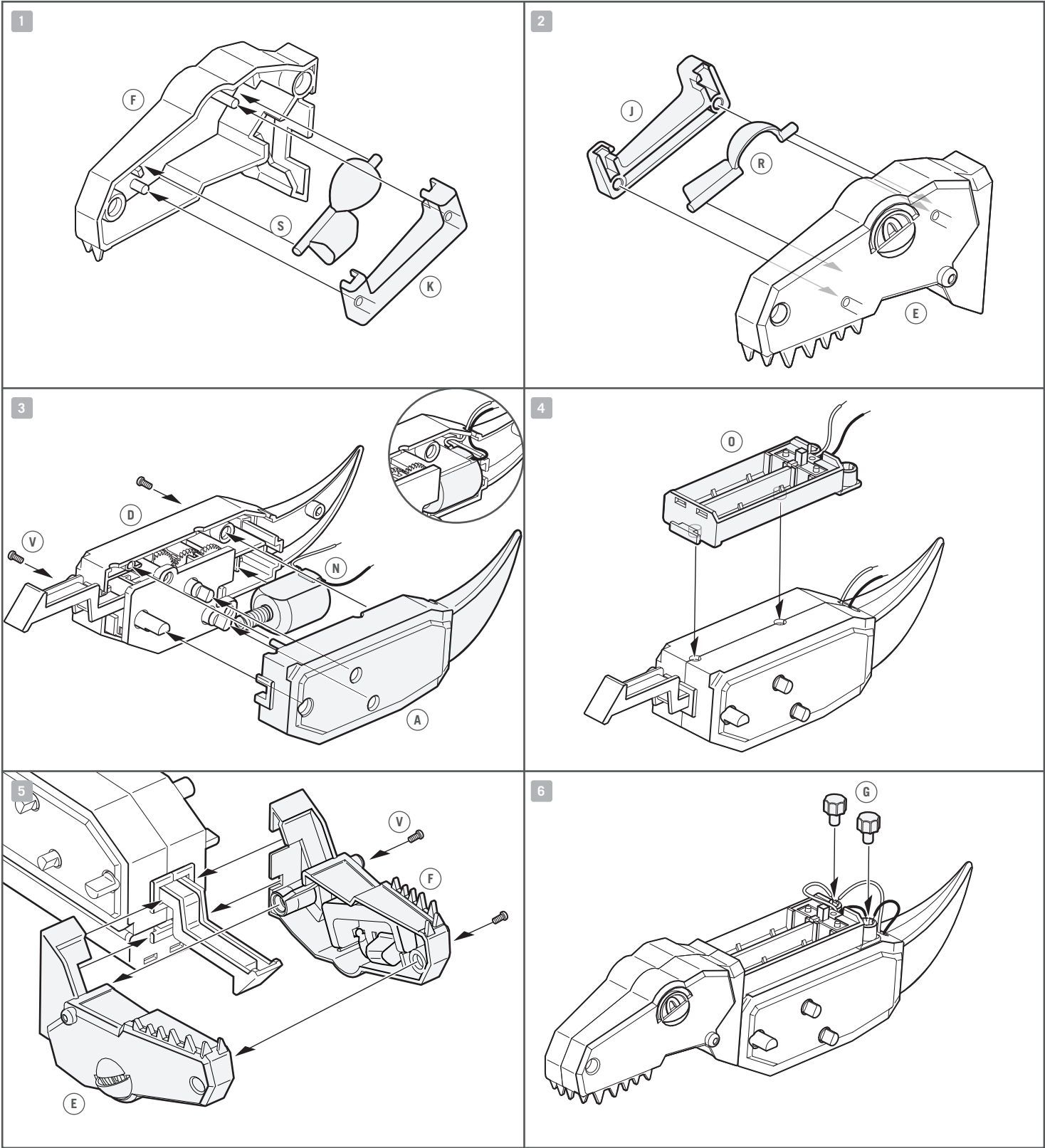
B. USE OF BATTERIES:
1. Requires two 1.5V AAA batteries (not included). 2. For best results, always use fresh batteries. 3. Make sure you insert the batteries with the correct polarities. 4. Remove the batteries from the kit when not in use. 5. Replace exhausted batteries straight away to avoid possible damage to the kit. 6. Rechargeable batteries must be removed from the kit before recharging. 7. Rechargeable batteries must be recharged under adult supervision. 8. Make sure that the supply terminals in the battery case are not short circuited. 9. Do not attempt to recharge non-rechargeable batteries. 10. Do not mix old and new batteries. 11. Do not mix alkaline, standard (carbon-zinc), or rechargeable batteries.

C. CONTENTS

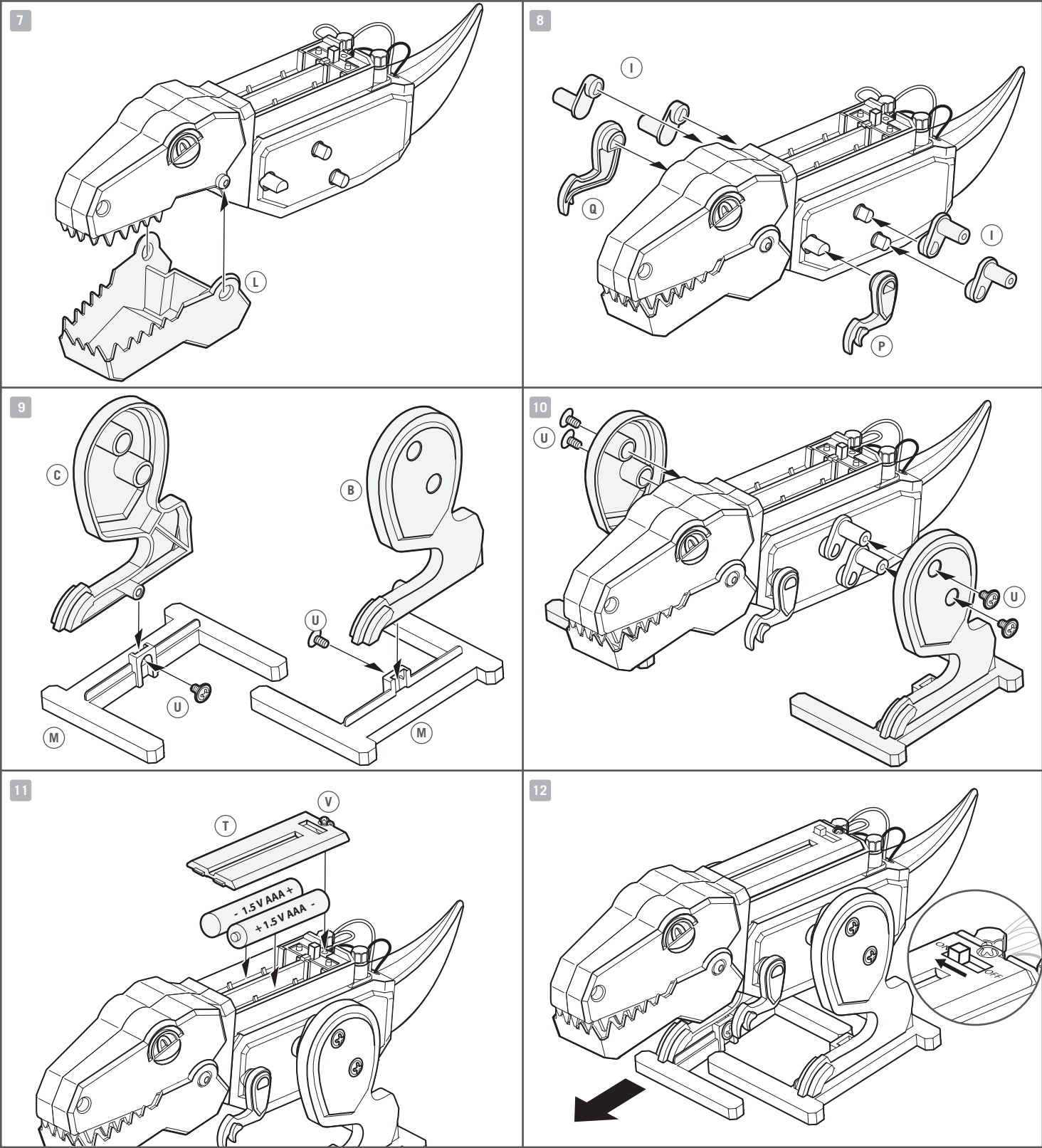


Part A : Left body, Part B : Left leg, Part C : Right leg, Part D : Right body (contains gear box), Part E : Left head, Part F : Right head, Part G : Terminal caps x 2, Part H : Adjuster x 2, Part I : Linkage x 4, Part J : Left eyelid holder, Part K : Right eyelid holder, Part L : Jaw, Part M : Foot x 2, Part N : Motor, Part O : Battery case, Part P : Left forearm, Part Q : Right forearm, Part R : Left eyelid, Part S : Right eyelid, Part T : Battery cover, Part U : Washer screw x 6, Part V : Screw x 5, Also required but not included in the kit: 2 x 1.5-volt AAA batteries, a small crosshead screwdriver.

D. INSTRUCTIONS



1. Insert the right eyelid (Part S) and right eyelid holder (Part K) into the right head (Part F).
2. Repeat step 1 with the left eyelid (Part R), left eyelid holder (Part J) and left head (Part E).
3. Insert the motor (Part N) into the right body (Part D), making sure that the motor wires are passed through the slot in the body. Then add the left body (Part A) as shown and secure it with two screws (Part V).
4. Clip the battery case (Part O) onto the assembled body.
5. Assemble the left head(Part E) and right head (Part F) as shown, then secure them together with two screws (Part V).
6. Push the bare ends of the wires into the terminals as shown, then secure them with terminal caps (Part G).



7. Clip the jaw (Part L) into position on the head.
8. Insert the four linkages (Part I) and two forearms (Part P and Part Q) as shown.
9. Slot the left leg (Part B) into one of the feet (Part M) as shown and secure the pieces together with a washer screw (Part U). Repeat this step with the right leg (Part C) and the other foot.
10. Slot the left leg assembly onto the two linkages on the left-hand side of the body. Secure it with two washer screws. Repeat this step with the right leg.
11. Insert two 1.5-volt AAA batteries into the battery case making sure you get the polarities correct. Add the battery cover(Part T) and secure it with a screw (Part V).
12. Your Tyrannosaurus Rex Robot is completed! Turn on the switch and watch the robot walk along with its moving forearms, jaw and eyelids.